

G R I P
500

Turtle Beach
Grip 500 Laser Gaming
Mouse

User Guide



Table of Contents

Table of Contents	4
Introduction	5
Installation	5
Opening and Closing Grip 500 Configuration Software	6
Configuring Your Grip 500 Mouse	7
Main Window	7
Profiles.....	7
Button Assignments.....	8
Performance Settings	9
Setting DPI levels	9
Setting DPI in each level	9
Setting Report [Polling] Rate	10
Setting Lift-Off Height	10
Setting Double Click Speed.....	10
Illumination Settings	11
Setting the Illumination Effect	11
Setting the Scroll Wheel Color.....	11
Macro Editor	12
Creating New Macros	12
Recording Macros with no Delays	13
Recording Macros with a Set Delay	13
Editing Macros.....	14
Saving, Loading, Deleting Macros	14
Help	14

Introduction

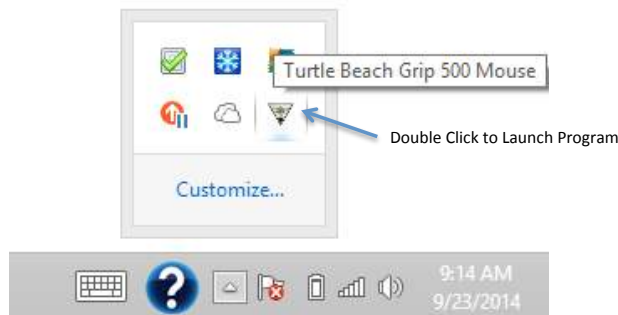
Welcome to the Turtle Beach Grip 500 Gaming Mouse User's Guide. This user's guide is intended to introduce you to the features and operation of your Grip 500 Gaming Mouse and the configuration software that can be used to enable and configure all its powerful features.

For more help, visit www.turtlebeach.com/grip500.

Installation

Visit www.turtlebeach.com/grip500 to download the Grip 500 Configuration Software.

Once the download completes, open the installer and follow the installation instructions. After installation, the Grip 500 Configuration Software and run in the background. You can launch the program by double clicking it in the system tray per the picture below.



Plug your Grip 500 Mouse into an available USB port. Occasionally, Turtle Beach will upgrade the firmware in the mouse. If the program says that it wants to upgrade the firmware in your mouse, please click OK and the mouse firmware will be updated.

By default, the Grip 500 Configuration Software will be located in your Program Files folder on Windows.

Installation Requirements

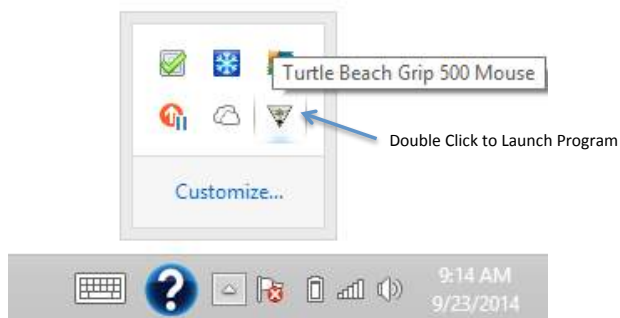
Grip 500 Configuration Software requires approximately 50 MB of free hard drive space and one of the currently supported platforms:

- Windows XP [32 and 64 bit]
- Windows Vista [32 and 64 bit]
- Windows 7 [32 and 64 bit]
- Windows 8 [32 and 64 bit]
- Windows 8.1 [32 and 64 bit]

Opening and Closing Grip 500 Configuration Software

After installation the Grip 500 Configuration Software background processes will start and the interface will open automatically.

When you close the application, an icon will remain in the system tray. You can re-launch the application by double clicking on the Turtle Beach icon in the system tray



You can also start the application by launching it from the Windows Start menu [in Windows 7] or from the Apps launcher [in Windows 8].

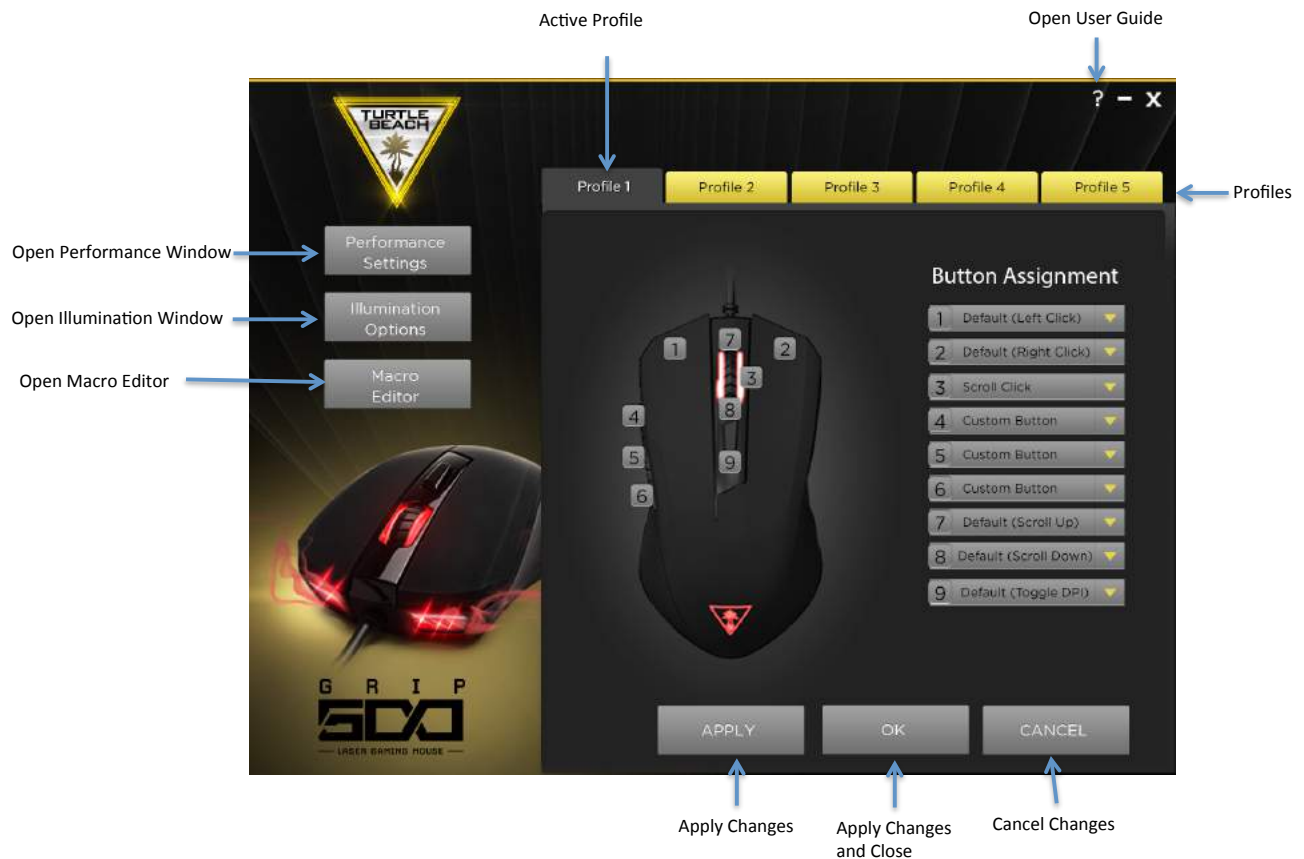
You can minimize the application by pressing the _ icon. In this case the application will run in the background and can be quickly reopened from the Task Bar. You can close the application by pressing the X icon. This closes the application but it remains available in the System Tray.

Configuring Your Grip 500 Mouse

You can enable features and customize the configuration of you Grip 500 from the main configuration window and the subsequent windows that open depending on what you are adjusting.

Main Window

Basic operations such as assigning actions to buttons and managing Profiles are accomplished from the main window.



Profiles

Grip 500 can be programmed with up to 5 Profile. A Profile holds all the configuration settings of you mouse including button assignments, macro assignments, illumination settings, and performance settings. It may be convenient to create a custom for your favorite games or applications. We also suggest that you select a different scroll wheel illumination color for each profile so that you can quickly see which profile you have selected.

The 5 profiles are stored in memory on the mouse so they will be present even if you plug your mouse into another computer that does not have the software installed. The profile that is active on the mouse is selected either by clicking on the Profile bar at the top of the window or by pressing the Profile button on the bottom of the mouse. Pressing the Profile button will cycle through your 5 Profiles. The currently active Profile will be on the top layer of the stack of Profiles and is Darkened while the other profiles are in the background and are gold colored.

To create a custom profile, select the settings and button assignments that you would like and then click on Apply. Pressing the Apply Button loads the Profile to the mouse and leaves the Configuration Window open for more operations. Pressing the OK button loads the Profile settings to the mouse and then closes the Window. Pressing the Cancel Button cancels all changes.

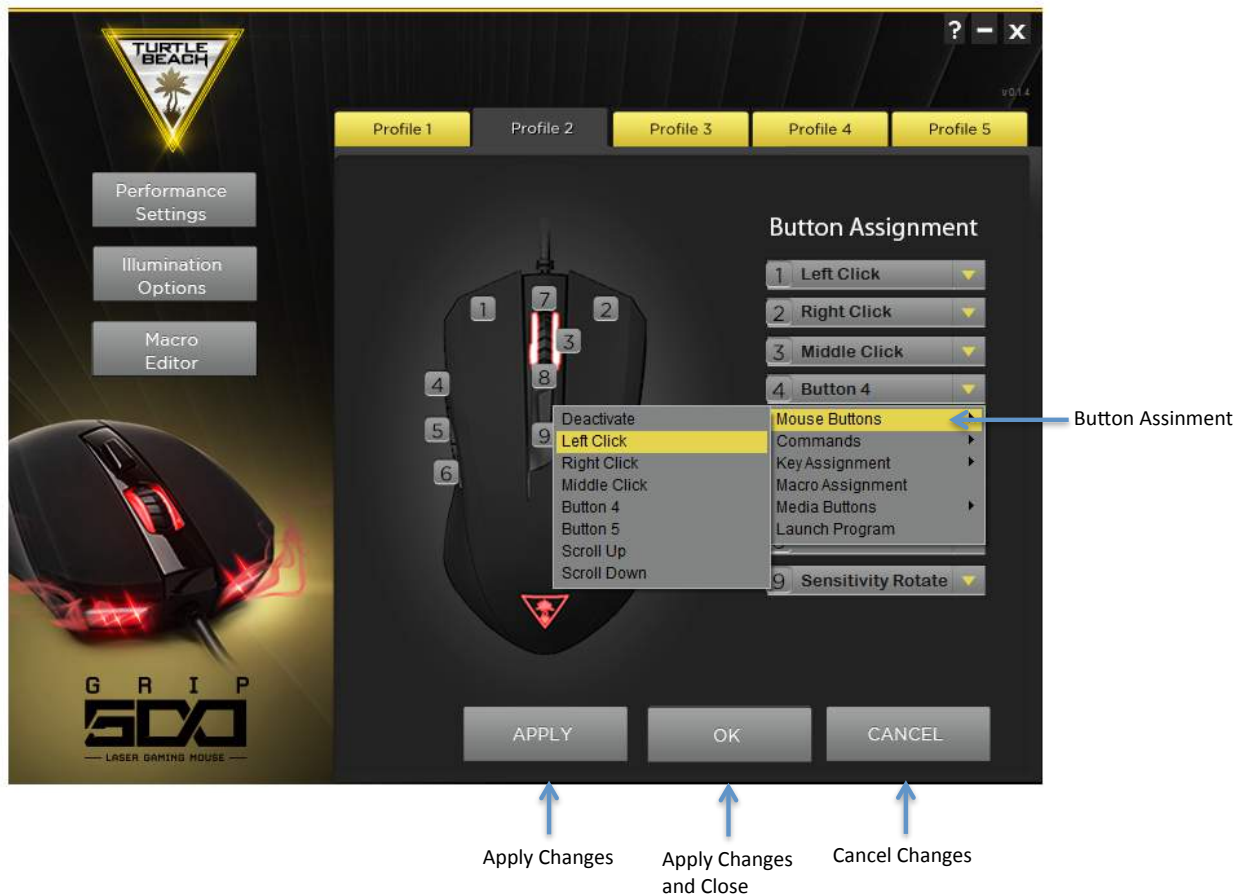
Button Assignments

All 9 buttons on the Grip 500 can be reprogrammed to do almost anything you want. This includes the scroll up and down operation.

You can program any of the following to buttons using the Button Assignment pull-down menus.

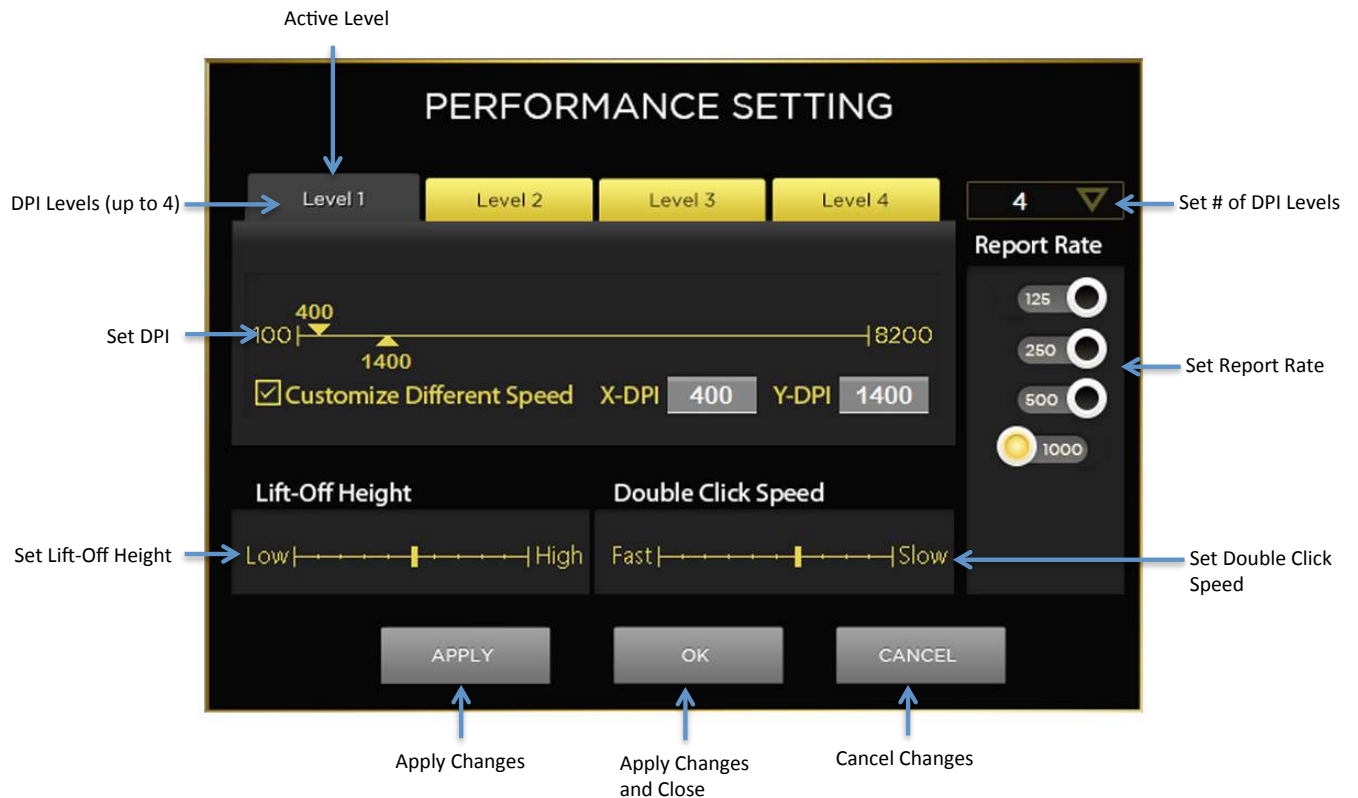
- Mouse buttons - Left click, right click, middle click, mouse button 4 and 5, scroll up, scroll down. You can also Deactivate the button.
- Sensitivity (DPI) - Up, Down, or Cycle to next setting.
- Keyboard keys - Up to 3 simultaneous keystrokes along with CTRL, SHIFT, ALT, and WIN modifier keys.
- Macros - You can create up to 50 complex Macros with up to approximately 100 commands each and then assign them to any button. First create the macro (See the Macro Creation section) and then assign it to any button.
- Media Buttons - Volume up, volume down, mute, play / pause, next, previous
- Launch a program - By selecting Launch Program, you can program a button to automatically launch another program. Select Launch Program and then locate the application .exe file. They usually are in your Program Files or Program Files (x86) folder.

After programming a button with a new command remember to hit the Apply or OK button to apply it to your mouse.



Performance Settings

To customize the performance settings of your mouse, press the Performance Settings button. This will open the Performance Settings Window.



This window allows you to customize the following for your mouse:

- Mouse movement speed (DPI) can be adjusted in up to 4 levels from DPI of 100 to 8200 in increments of 50 DPI.
- DPI for the X direction (horizontal) and Y direction (vertical) can be set differently if you'd like. This may be useful in games where you want to be able to move or aim faster left to right than up and down.
- Report (Polling) Rate can be set in the following levels - 125, 250, 500, or 1000 Hertz. Generally if you have a fast computer, 1000 Hz is best. If you have a slower computer a lower setting may be better.
- Lift-Off Height. This adjustment allows you to tailor how high you have to lift the mouse off the surface to get it to stop tracking. This can be useful to get the best performance from your mousepad and your personal preference for moving and picking up your mouse.
- Double click speed - Adjusts how fast you click the buttons to get Windows to register it as a double click.

Setting DPI levels

On the upper right section of the window, select the number of DPI levels you would like in this profile (from 1 to 4). This will change the number of panels you will be visible. The currently active Level will be on the top layer of the stack of Levels and is Darkened while the other Levels are in the background and are gold colored.

Setting DPI in each level

For each level that you created, set the DPI by sliding the DPI slider to the DPI you want. Or you can click in the DPI box and type the exact DPI.

If you'd like to set the X and Y DPI's differently, select the Customize Different Speed checkbox. This will then separate the DPI slider into 2 different ones and you can then set the X and Y DPI's to different numbers.

Press Apply or OK to save those settings. Click Cancel if you want to change what you have changed.

Setting Report (Polling) Rate

Report rate is the frequency that the mouse reports its status to the Windows operating system. A setting of 1000 hertz means that it reports 1000 times per second or approximately once every 1 ms. This is very fast. Most modern computers are fine getting information this quickly. You only need to adjust this setting if you have a slower computer or one that is doing a lot of other operations.

If you'd like to set it lower just click the switch corresponding to 125, 250, 500, or 1000 Hz.

Setting Lift-Off Height

You can change how high you have to lift the mouse off the surface for it to stop tracking. The default level is medium which is approximately 1.5 mm on the Turtle Beach Drift Mousepad. Using the slider you can adjust the lift distance from about 0 to 2.5 mm.

Experiment with levels from low to high to find the level you prefer.

Caution: While experimenting with lift distance, when you go to the lowest level, the mouse may stop tracking on your surface. Be sure to have another mouse input device (like a trackpad or a 2nd mouse) so that you can still move your cursor around and select a higher Lift-Off distance if this happens.

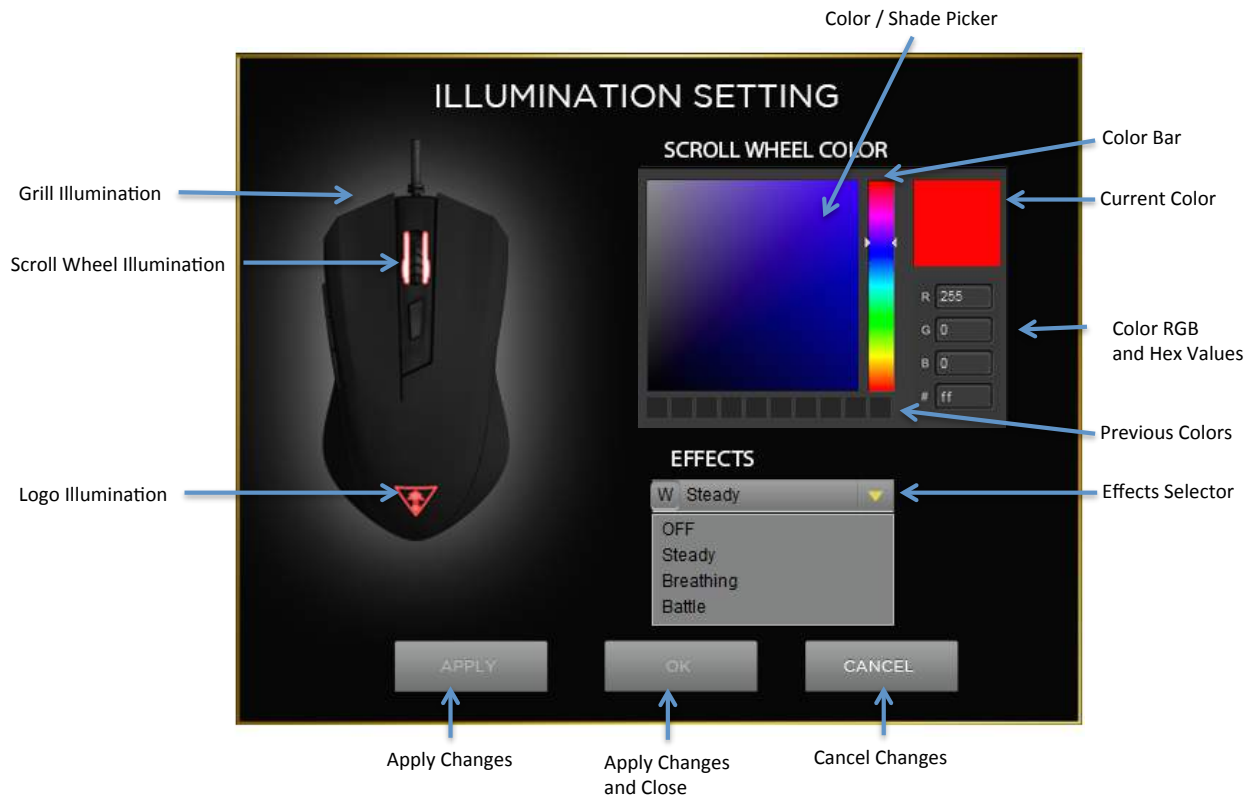
Setting Double Click Speed

Slide the Double Click Speed cursor back and forth to adjust the Windows double click speed from fast to slow.

After changing settings always remember to press Apply or OK to save your settings to your mouse.

Illumination Settings

To customize the Illumination of your mouse press the Illumination Settings button. This will open the Illumination Settings Window.



In this window, you can set the illumination of the 3 zones (scroll wheel, Turtle Beach logo, and front grill).

Setting the Illumination Effect

Notice that when you hover your cursor over the logo, scroll wheel, or front of the mouse that that area glows brightly. Click on one of the 3 zones and then go over to the Effects pull-down menu and select the illumination effect you want. You can select from:

- OFF - Turn the illumination off
- Steady - The illumination stays on all the time
- Breathing - The illumination goes up and down like it is breathing.
- Battle - The illumination starts off but then gets brighter and brighter based on how fast you are clicking your mouse buttons.

Setting the Scroll Wheel Color

The scroll wheel has a full RGB (red - green - blue) LED so you can set it to 16.8 million possible colors. Hover your cursor over the scroll wheel and then click on it. This will enable the color picker. To set the color, first select the color using the vertical color bar. Then select the brightness shade of that color in the box to the left of the color bar.

The boxes on the bottom right tells you the value of the R(red), G(green), and B(blue) components of the LED. It also tells you the hex value of that color. These may be useful to set an exact color that you like from some other application.

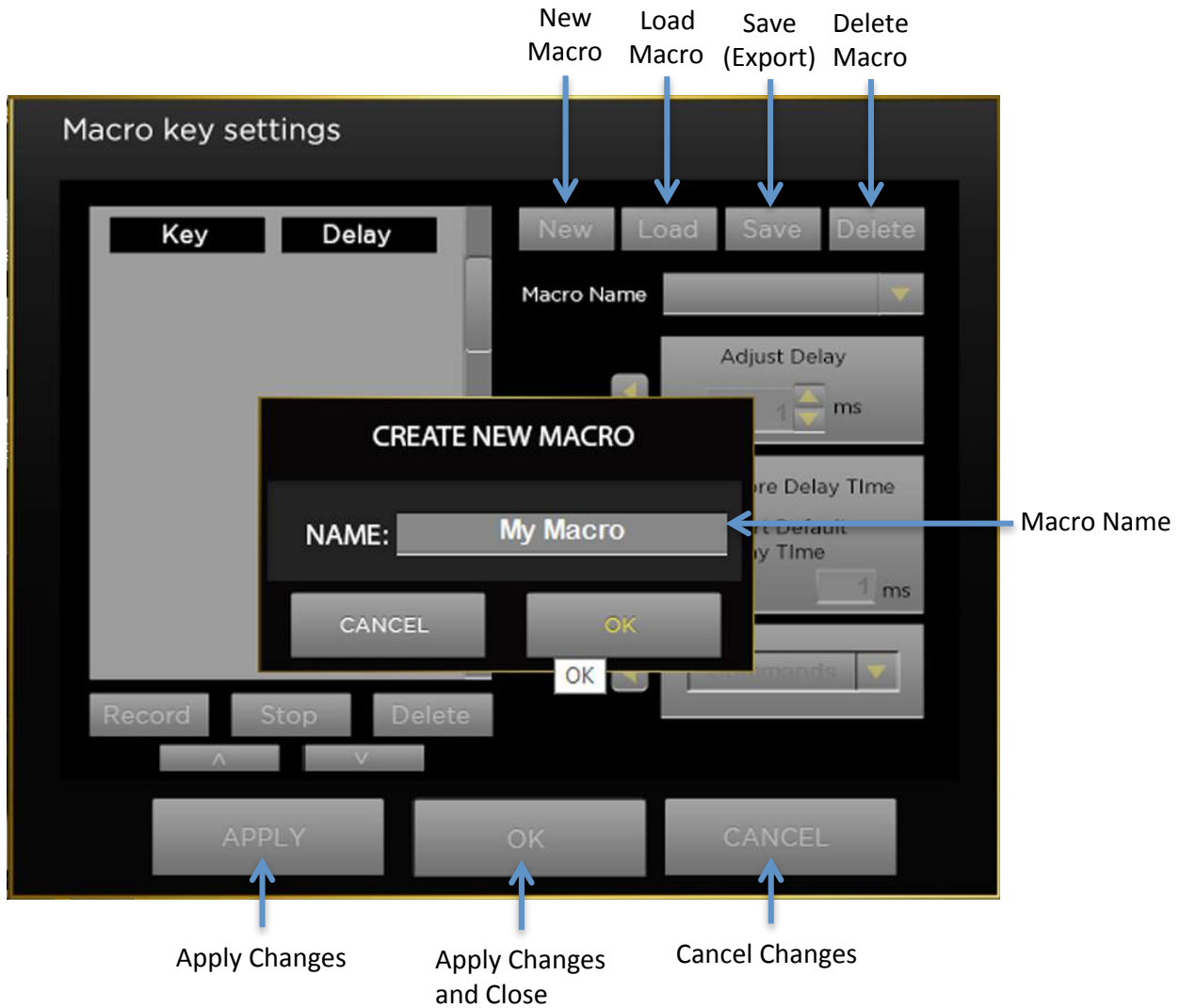
After selecting the color and effect, remember to press Apply or OK.

As you use colors, the software will remember up to 10 colors and place them in the little boxes at the bottom of the scroll wheel color picker. You can reuse them later by clicking on the one you want.

Macro Editor

With the Grip 500 and its configuration software, you can create and assign complex combinations of keystrokes so that you can do almost anything you want. You can also insert commands and customize the timing / delays between those keystrokes.

To enable the Macro Editor press the Macro Editor button which will bring up the main macro editor screen.



Creating New Macros

The first step is to create your macro. Press the New button and the above Create New Macro box will popup. Type in a name for your macro and then press OK.

Then press the Record button. Now all keystrokes that you type will be recorded along with the timing (how fast you are pressing the buttons). When you have completed your macro click on the Stop button. Your macro is now ready to assign the any mouse button. If you want to make more detailed adjustments to your macro you can edit it using the same screen.

Recording Macros with no Delays

If you want to record macros with no delay between the keystrokes then before you click Record, first select the box next to the Ignore Delay Time Box then click the apply Arrow. Then press Record and press all the keystrokes you want in your macro. Once you are complete, click on the Stop button. Now the delay between your keystrokes will be 0 ms and they will be output to the computer as fast as possible.

The screenshot shows the 'Macro key settings' dialog box. On the left, a table lists keys and their delays:

Key	Delay
G <Press>	0ms
G <Release>	0ms
R <Press>	0ms
R <Release>	0ms
I <Press>	0ms
I <Release>	0ms
P <Press>	0ms
P <Release>	0ms

At the bottom of the table, the 'Record' button is highlighted with a blue arrow pointing to it, labeled 'Record Macro'. To the right of the table, there are several controls:

- 'New', 'Load', 'Save', 'Delete' buttons at the top.
- 'Macro Name' dropdown set to 'My Macro 2'.
- 'Adjust Delay' section with a value of '0 ms'.
- 'Ignore Delay Time' checkbox, which is checked, with a blue arrow pointing to it labeled 'Select Ignore Delay Time'.
- 'Insert Default Delay Time' section with a value of '1 ms' and a blue arrow pointing to it labeled 'Press Apply Arrow'.
- 'Commands' dropdown.
- 'Record', 'Stop', and 'Delete' buttons at the bottom.
- 'APPLY', 'OK', and 'CANCEL' buttons at the very bottom.

Recording Macros with a Set Delay

If you want to record macros with the same non-zero delay between the keystrokes then before you click Record, first select the box next to the Insert Default Time Box then click the apply Arrow. Then press Record and press all the keystrokes you want in your macro. Once you are complete, click on the Stop button. Now the delay between your keystrokes will be the same number of ms and they will be output to the computer at that rate. See the below example using 5 ms delay.

The screenshot shows the 'Macro key settings' dialog box. On the left, a table lists keys and their delays:

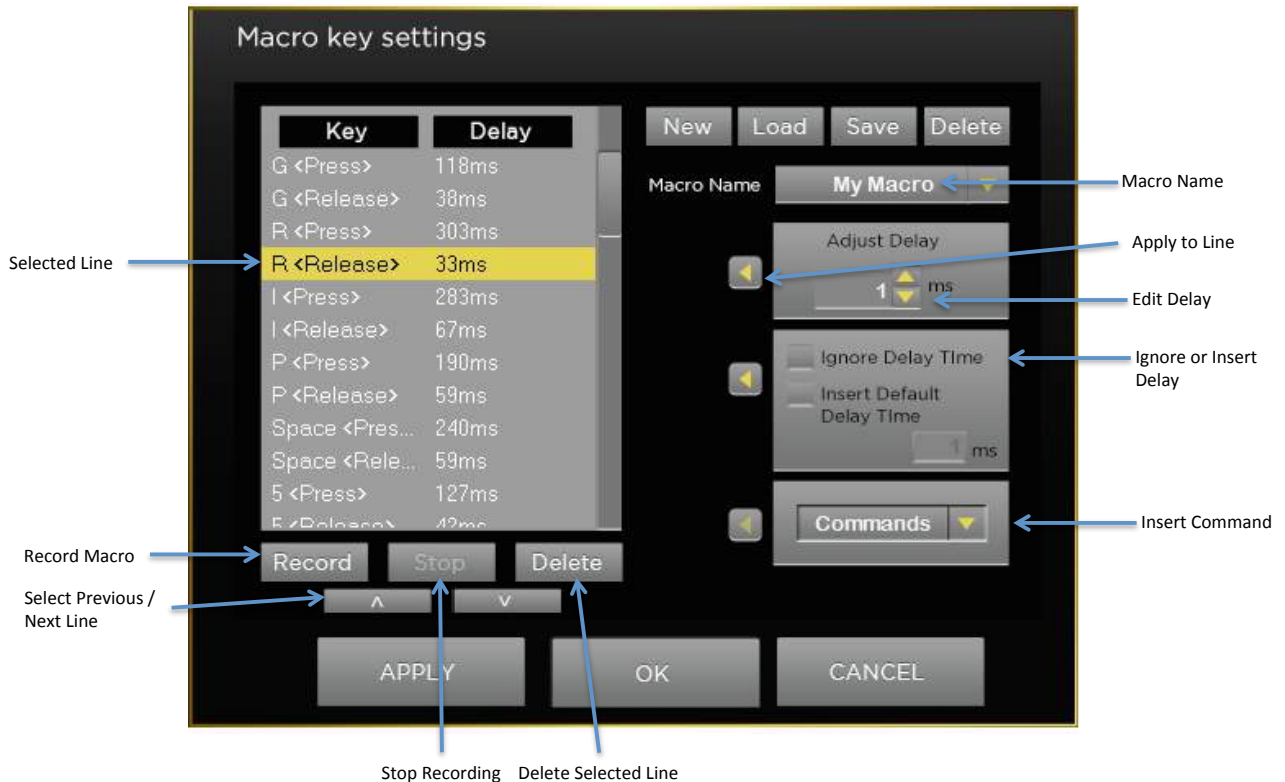
Key	Delay
G <Press>	0ms
G <Release>	0ms
R <Press>	0ms
R <Release>	0ms
I <Press>	0ms
I <Release>	0ms
P <Press>	0ms
P <Release>	0ms

At the bottom of the table, the 'Record' button is highlighted with a blue arrow pointing to it, labeled 'Record Macro'. To the right of the table, there are several controls:

- 'New', 'Load', 'Save', 'Delete' buttons at the top.
- 'Macro Name' dropdown set to 'My Macro 2'.
- 'Adjust Delay' section with a value of '0 ms'.
- 'Ignore Delay Time' checkbox, which is checked, with a blue arrow pointing to it labeled 'Select Ignore Delay Time'.
- 'Insert Default Delay Time' section with a value of '1 ms' and a blue arrow pointing to it labeled 'Press Apply Arrow'.
- 'Commands' dropdown.
- 'Record', 'Stop', and 'Delete' buttons at the bottom.
- 'APPLY', 'OK', and 'CANCEL' buttons at the very bottom.

Editing Macros

You can also edit macros that you previously recorded from the macro editor window.



To change the timing of commands in your macro, select the line of the keystroke in the editor window and then change the delay in the Adjust Delay box. When you have the delay you want to apply to that line click on the left arrow to apply it to that line. You can apply the same delay (or a different one) on any step in your macro via the same method.

If you'd like to insert Commands [such as Page Up, Copy, Paste, Close Window, Undo, Print Screen, Zoom In] select the line just after where you would like to insert the command. Then select the desired Command from the Commands pull-down menu and press the Apply Arrow. Your command will be inserted just above the selected line.

Saving, Loading, Deleting Macros

You can save macros to a file for use later on another computer or to send to a friend.

To save a macro select the macro that you want to save and then press Save. Then select the location on your computer where you would like to save your macro. A file with a .mac file extension with the file name of your macro will be saved in that location. You can then copy or email that file to another computer and your macros will be there.

To load a macro that you saved, press the Load button and navigate to the location on your computer where the file is stored. The macro will now be available for use on that new computer. [Note: The other computer needs to have the Grip 500 Configuration software installed.

Help

To access this manual at any time, press the ? [Help] button on the top right of the window.