

TURTLE BEACH
#1 IN GAMING AUDIO

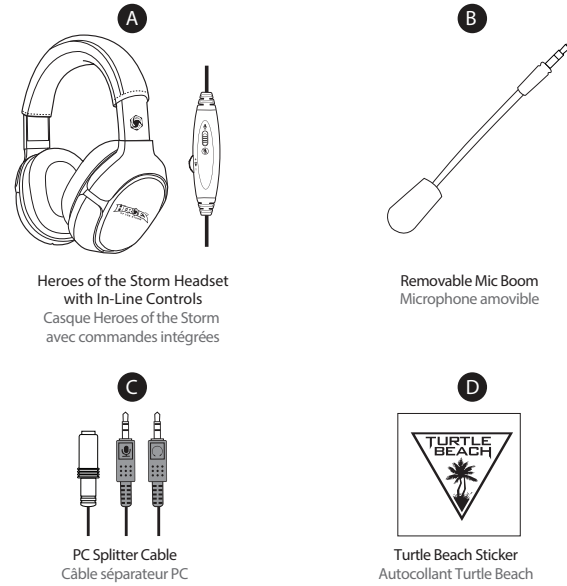
WIRED
FOR / POUR: PC
Mac | Mobile



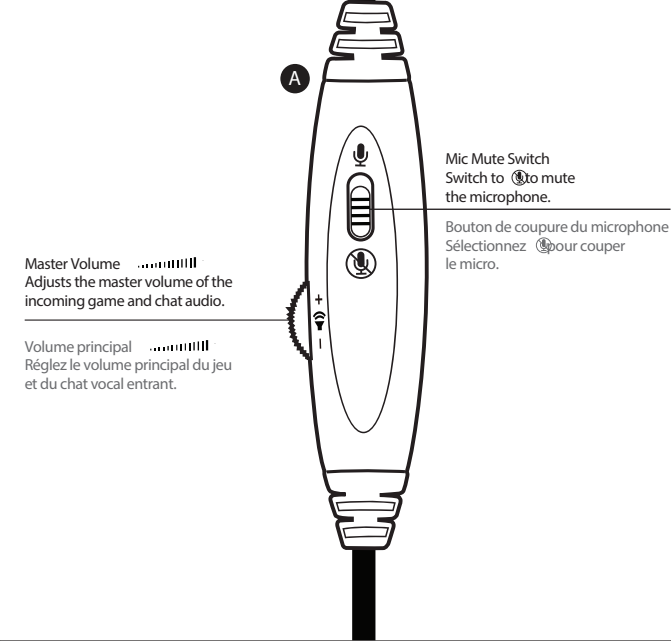
HEROES OF THE STORM
Quick Start Guide

For more detailed product information, visit www.turtlebeach.com/HoTS
For additional setup information visit www.turtlebeach.com/connect

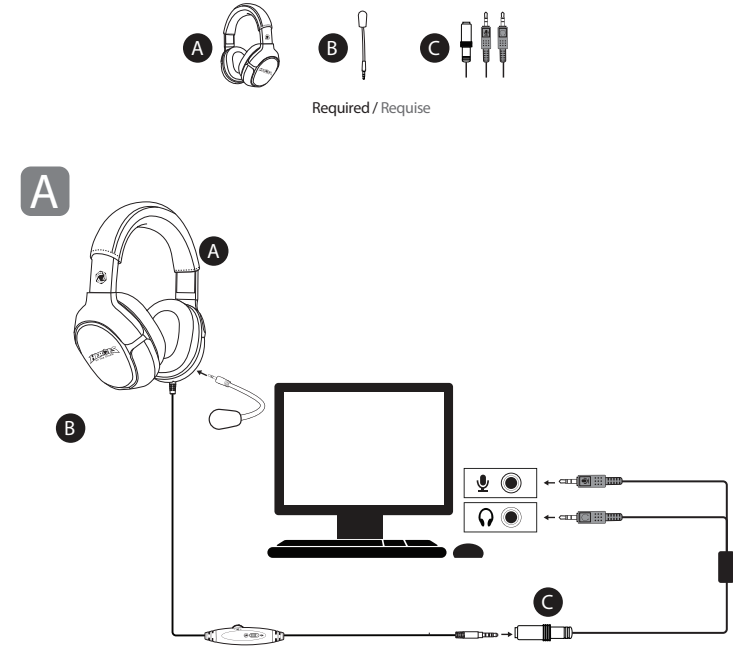
Package Contents
Contenu de la boîte



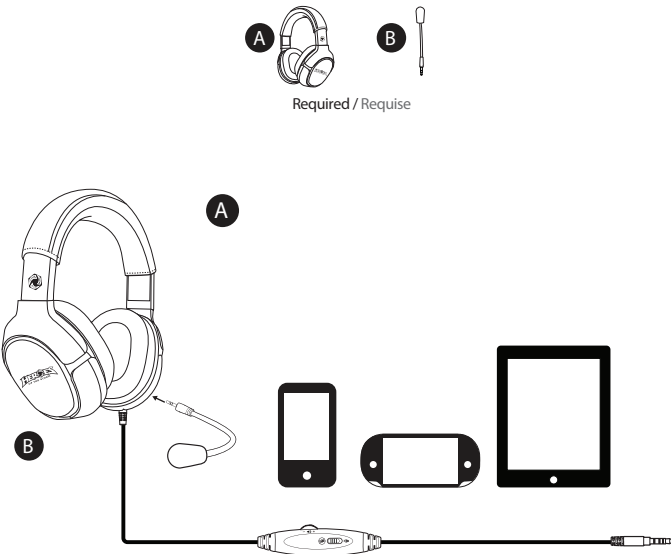
In-line Controls
Commandes intégrées



PC Setup
Configuration PC



Mobile Setup
Configuration mobile



Removable Plates
Plaques amovibles



Customize your headset at / Personnalisez votre casque:
turtlebeach.com/speakerplates

*The availability of additional speaker plates varies by market and is subject to local restrictions.
*La disponibilité des plaques complémentaires dépend du marché et peut-être sujette à des restrictions locales.



Exclusive Heroes of the Storm character skin with product registration at turtlebeach.com/heroes2014

Apparence de personnages Heroes of the Storm exclusive, offerte pour tout enregistrement du produit sur turtlebeach.com/heroes2014

Compliance
Conformité

Regulatory Compliance Statements for the EAR FORCE Heroes of The Storm
Federal Communications Commission (FCC) Compliance Notices
Class B Interference Statement
This equipment has been tested and found to comply with the limits for a Class B digital device, pursuant to Part 15, Subpart B of the FCC Rules. These limits are designed to provide reasonable protection against harmful interference in a residential installation. This equipment generates, uses, and can radiate radio frequency energy and, if not installed and used in accordance with the instructions, may cause harmful interference to radio communications. However, there is no guarantee that interference will not occur in a particular installation. If this equipment does cause harmful interference to radio or television reception, which can be determined by turning the equipment off and on, the user is encouraged to try to correct the interference by one or more of the following measures:
• Reorient or relocate the receiving antenna.
• Increase the separation between the equipment and receiver.
• Connect the equipment into an outlet on a circuit different from that to which the receiver is connected.
• Consult the dealer or an experienced radio/TV technician for help.
FCC Caution:
This device complies with Part 15 of the FCC Rules. Operation is subject to the following two conditions: (1) This device may not cause harmful interference, and (2) this device must accept any interference received, including interference that may cause undesired operation.
Canadian ICES Statements
Canadian Department of Communications Radio Interference Regulations
This digital apparatus does not exceed the Class B limits for radio-noise emissions from a digital apparatus as set out in the Radio Interference Regulations of the Canadian Department of Communications. This Class B digital apparatus complies with Canadian ICES-003.
Règlement sur le brouillage radioélectrique du ministère des Communications
Cet appareil numérique respecte les limites de bruits radioélectriques visant les appareils numériques de classe B prescrites dans le Règlement sur le brouillage radioélectrique du ministère des Communications du Canada. Cet appareil numérique de la Classe B est conforme à la norme NMB-003 du Canada.

European Union and European Fair Trade Association (EFTA) Regulatory Compliance
Declaration of Conformity

Marking by this symbol: **CE**
indicates compliance with the Essential Requirements of the EMC Directive of the European Union (2004/108/EC). This equipment meets the following conformance standards:
Safety: EN 60950-1:2006 + A11 + A12* (T-Mark License)
Also Licensed for Standards:
IEC 60950-1:2005 + A1:2009, (CB Scheme Report/Certificate),
UL60950-1 (NRTL License), CSA22.2, 60950-1 (SCC License)
Additional licenses issued for specific countries available on request
Emissions: EN 55022:2010, EN 50332-1:2000, EN 50332-2:2003
CISPR 22:2008
Immunity: EN 55024:2010, EN61000-4-2:2008, EN61000-4-3:2010,
EN 61000-4-8:2008-10

The products are licensed, as required, for additional country specific standards for the International Marketplace. Additional issued licenses available upon request.
Environmental: Low Voltage Directive 2006/95/EC, RoHS 2011/65/EU,
REACH 2006/1907/EC, WEEE 2012/19/EU, Packaging 94/62/EC

This symbol on the product or its packaging indicates that this product must not be disposed of with your other household waste. Instead, it is your responsibility to dispose of your waste equipment by handing it over to a designated collection point for the recycling of waste electrical and electronic equipment. The separate collection and recycling of your waste equipment at the time of disposal will help conserve natural resources and ensure that it is recycled in a manner that protects human health and the environment. For more information about where you can drop off your waste for recycling, please contact your local authority, or where you purchased your product.